

SWE OFFSHORE
ACCOMMODATION SERVICES

SWEO MOORED ACCOMMODATION
M/V PATRIA SEAWAYS



SUPPORTING OUR CUSTOMERS IN ACHIEVING THE MOST EFFICIENT PERFORMANCE POSSIBLE

SWE OFFSHORE

ACCOMMODATION SERVICES

SweOffshore combines services and assets to provide efficient solutions based on a full service concept



SweOffshore provides offshore accommodation services with the highest safety and quality standards



Spirit and drive of a young company combined with 100 years of experiences



SweOffshore holds ISO 9001 and 14001 accreditations to ensure consistent high quality in our services



Safety and quality are our fundamentals – based on that we provide further services for your benefits



SweOffshore provides you with the services needed to secure efficiency as well as safety and comfort for your employees



Accommodation concept: "Supporting our customers in achieving the most efficient performance possible"



We make sure our customers Secure as high operational uptime as possible



We provide full service solutions with high focus on food, comfort and safety



SweOffshore
Fabriksgatan 10
SE-412 50 Gothenburg, Sweden

+46(0)31 788 78 00
commercial@sweoffshore.com
www.sweoffshore.com



Introduction

SweOffshore Accommodation concept, “Supporting our Customers in achieving the most efficient performance possible” means that we secure higher operational uptime by:

- Ability to operate in higher waves
- Efficient processes at crew transfers
- Minimizing time at Port Calls
- Securing the well being on board
- Large storage space for tools and equipment

Our recent customers Siemens / Statoil, Bard Offshore and Dong Energy have experienced this. References on request.

SweOffshore provides full-service delivery of personnel, equipment and vessels within our business areas of offshore accommodation. Our services are based on plug-and-play architecture, ensuring scalability while providing unique product customization options.

SweOffshore upholds a lean and efficient organization, balancing speed of delivery with safety and quality of service. Our management team has many years of combined experience within offshore, shipping in general, subsea, marine logistics, IT & communication and finance.

SweOffshore has build extensive relationships with carefully selected partners who are ready to commit resources as needed within specialized fields such as naval architects, IT and communication and logistics. These partners are also supporting us in the further development of our services and vessels.

Our aim is that our clients will see us as a partner rather than as a supplier. By listening to our customers’ needs we find the most optimal solution in terms of economy, time and reliability – all based on our fundamental focus on safety and quality. We are on a continuous basis experiencing that our new and innovative services are highly valued by our costumers.

We add value to our customers’ business.

Health, Safety, environment and quality

SweOffshore strives to always provide safe and high quality services. This includes using new technology and innovative solutions to meet and exceed the expectations of our clients.

SweOffshore's integrated management system for safety, quality, environment and work environment ensures that we can meet clients' requirements and follow applicable legislation and have a "green focus" towards the environment.

We are constantly working towards continuous improvement. Our management system is certified in accordance with ISO 9001:2008 and ISO 14001:2009 and we have begun the process of certifying in accordance with OHSAS 18001 as well. Following that we will start the ISO 22000:2005 for Catering Services.

We are committed to creating a safe and healthy working environment, for our employees, our clients and for all other parties involved in our activities. This includes complying with applicable legislation, ensuring that the necessary personal protective equipment is available and in use, and a safe way of thinking is promoted through a constantly safety awareness.



Safety briefing during loading of containers



Safety briefing

Quality operation

SweOffshore provides offshore accommodation services with the highest safety and quality standards.

The SweOffshore Accommodation concept is much more than “just” providing vessel and hotel services. Our services are developed to: “Supporting our customers in achieving the most efficient performance possible” meaning that we secure as many operational days as possible. We secure this by only operating vessels with less weather impact, by limiting the time at port and by having extended communication facilities limiting the waiting time for crew boats etc.

Our accommodation offering is based on:

- Providing a full service concept
- Being the best in class on safety and quality
- Combining assets and services to optimize operational time
- Providing additional services to increase comfort on-board
- Proprietary Information System for monitoring and control of operations
- Providing the basis for your people to work as efficient as possible

1 Safety

Safety and quality are our fundamentals – our base to which we add services for your benefit.

2 Comfort

We provide full service solutions with high focus on food and comfortable stay on-board.

3 Optimization

We understand the importance of efficiency and flexibility for the offshore wind industry.

IT & Communication

SweOffshore is on the very forefront in terms of utilizing IT and communication for the benefit of our customers.

The on board offices network is Ethernet with fibre optic cables and can be split into several VLANS able to configured as per our customers' needs.

The network is accessible across the entire vessel, including all cabins and all public areas, via WiFi and further via cables in office areas. If a user doesn't have a personal PC the internet can be accessed from any other type of device such as tablets and smartphones.

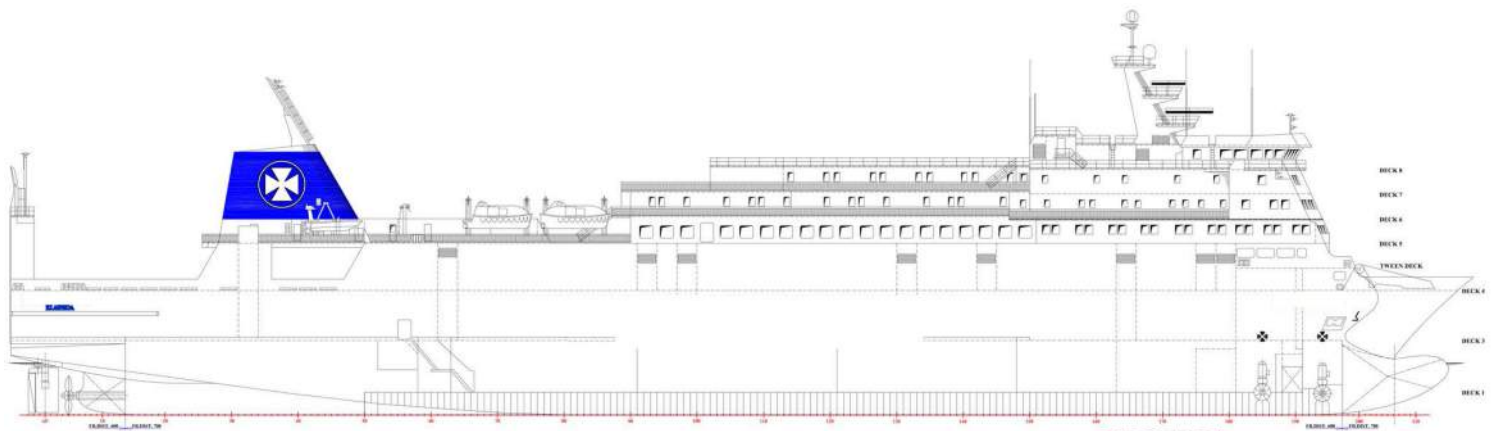
On board we have an IP based radio communication system. This allows communication via an application, from and to iPhone, Android and PC's to most of the modern radio systems over 3G or our WiFi network.

The IP communication supports most radio systems such as Motorola Trbo, Tetra, Analogue UHF and VHF etc. It also enables ship to shore communication via satellite.

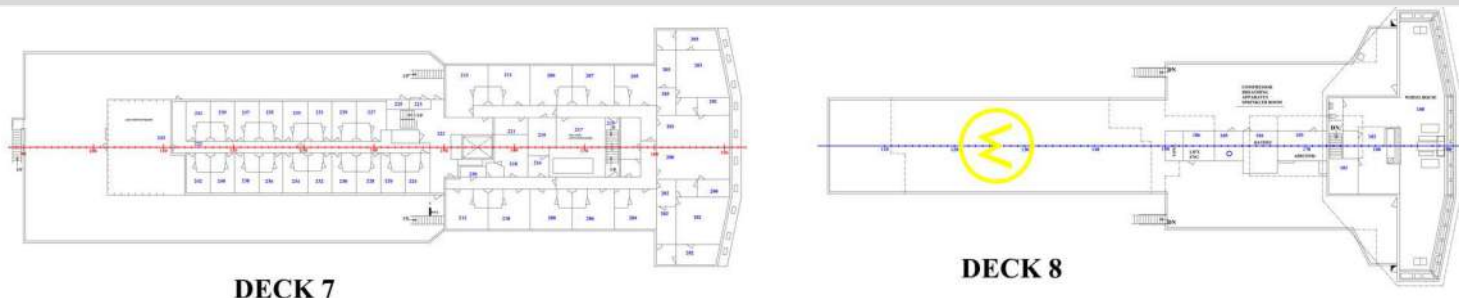


Patria Seaways vessel specification

Built	1991, Bruce Shipyard Ab, Landskrona.
Flag	Lithuanian
Class	Lloyds Register
Length	154 meters
Breadth	24 meters
Draft	About 5.90 meters
Cabins capacity	About 100 single cabins
Main engines	2 x Sulzer 8ZA40S Diesel, Total output 10560kW
Bow thrusters	2 x 760 kW
Fuel consumption	About 36 mtons / 24 hrs at 16 knots
Fuel consumption idle	About 3 mtons / 24 hrs
Office areas	About 200 m ² office areas and meeting rooms
Operational days	30-40 days without port call
Warehouse capacity	2 decks with Ro/Ro access with full container height
Boat landing	Built 2015, SweO type 2 boat landing
Communication	Marine IT system with Vsat antenna, standard speed of 4/2 Mbit (upgradable). With IP communication system
Offshore bunker station	Optional
Fresh water maker	Yes, about 24 tonnes/day



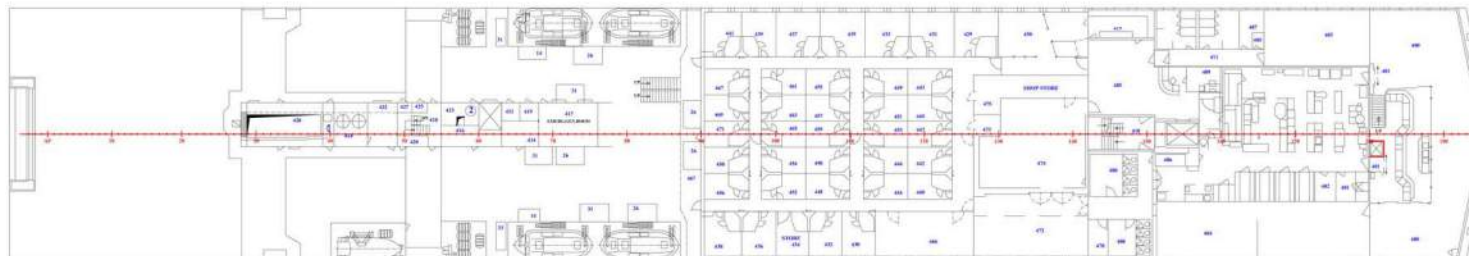
Deck 7-8 - Cabins, crew cabins and crew area, mess and wheel house.



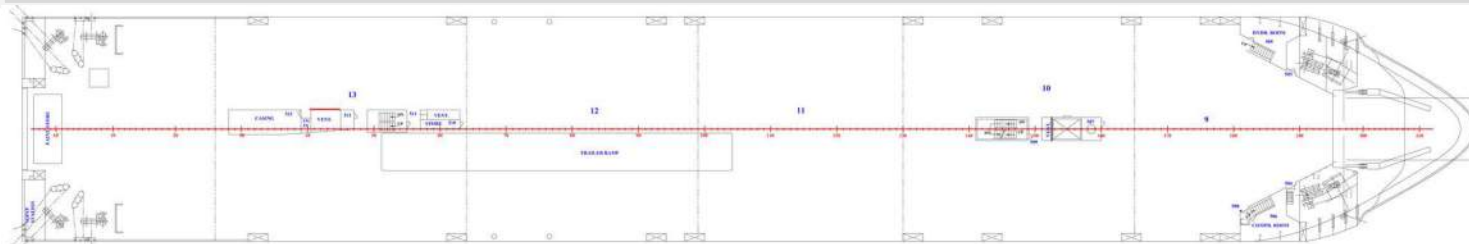
DECK 6 - Most cabins are located on this deck. All have ensuite bathrooms.



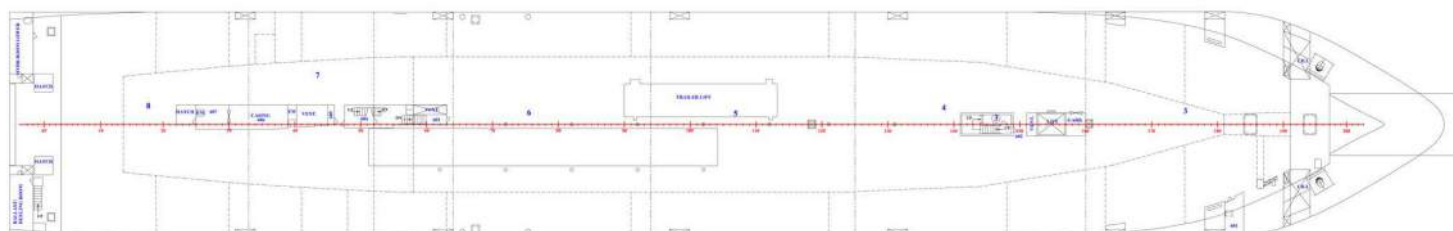
DECK 5 - Cabins. Reception. public areas with offices, lounges, the restaurant and the gym.



DECK 4 - Is a cargo deck with access from deck 3 via a ramp.



DECK 3 - Is the main client cargo deck with direct access to the boat landing in the aft.



24/7 hour reception



On-board entertainment system



There are about 100 single cabins.



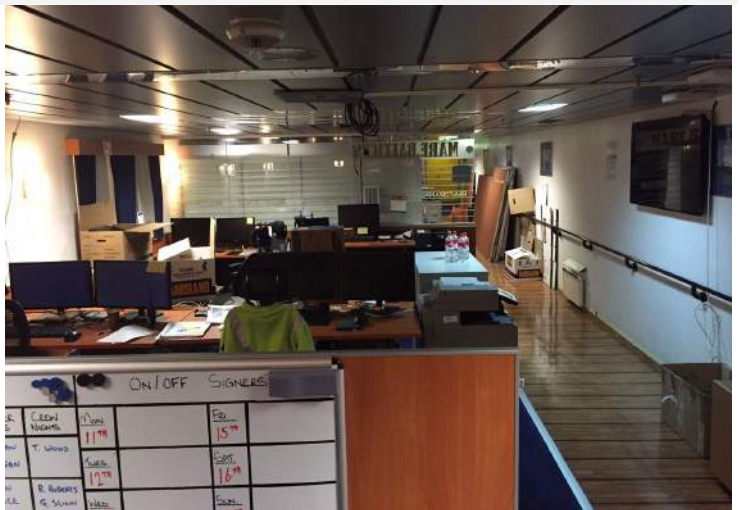
Lounge area with TV



High quality food in the restaurant



One of the offices



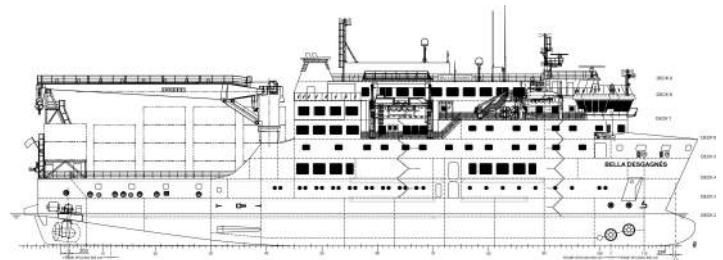
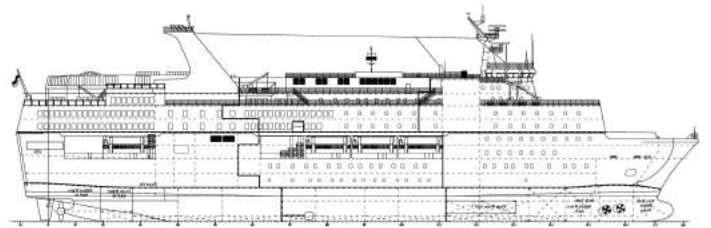
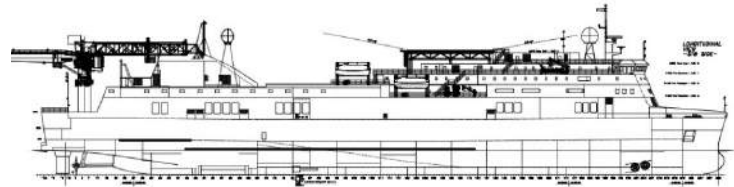
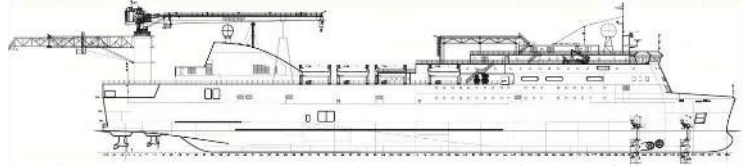
Other accommodation concepts

- SweO DP2 Advanced config 1
 - DP2 vessel
 - Diesel electric machinery
 - Up to 700 people on board
 - Very fuel efficient

- SweO DP2 config 1
 - DP2 vessel based on traditional propulsion
 - High speed for transports up to 24 knots
 - Up to 700 people on board

- SweO moored
 - Up to 500 people on board
 - 1-8 point mooring
 - Fuel efficient

- SweO DP2 Service
 - DP2 vessel
 - Up to 200 people on board
 - 14-18 months delivery time



All information believed to be correct, but not guaranteed